

# DRUG USE and PROBLEMS in GENERAL PRACTICE

2. PLT: 6.6.2019 pm

**“It’s not just about heroin”**  
a broad look at drugs and  
health for the whole team



# What's on this afternoon Part 1

- **1.30 Welcome**  
*Anna Livingstone TH Clinical Lead*
- **1.35 P-RESET: How are we doing and what do we need to do now?**  
*Chris Ley and Tariq Wooding-Olajorin RESET team*
- **2.00 Safe East for young people of 11 to 19**  
*Lisa Sturrock Service Manager Safe East (Compass)*
- **2.10 'It's not just heroin and booze': What drugs are people using, why, the effects and problems, and what support is there?**  
*Chris Burgess, Care Coordinator RESET Treatment Service and  
Monty Moncrieff, CEO London Friend LGBT health & wellbeing charity*
- **Break 3.25 followed by workshops 3.35 to 4.30**

# What's on this afternoon Part 2

- Break 3.25
- **3.35 THE WORKSHOPS - your choice – Session ends 4.30.**
  - 1. Health checks and plans, what does and doesn't work for you and your patients?** Share experience and problems and get tips. For HCAs, GPs, nurses and others doing them. **(ROOM 5)**
  - 2. Naloxone saves lives!** : Learn how to cut opiate deaths at RESUS and by helping people have the kit with them. Chris Burgess, RESET. This is open to everyone, we all need to know and get the message out. **(ROOM 3)**
  - 3. Building Relationships patients, practice, the community,** facilitated by Tariq Wooding-Olajorin, P-RESET coordinator. For the RECEPTION TEAM. **(ROOM 4)**

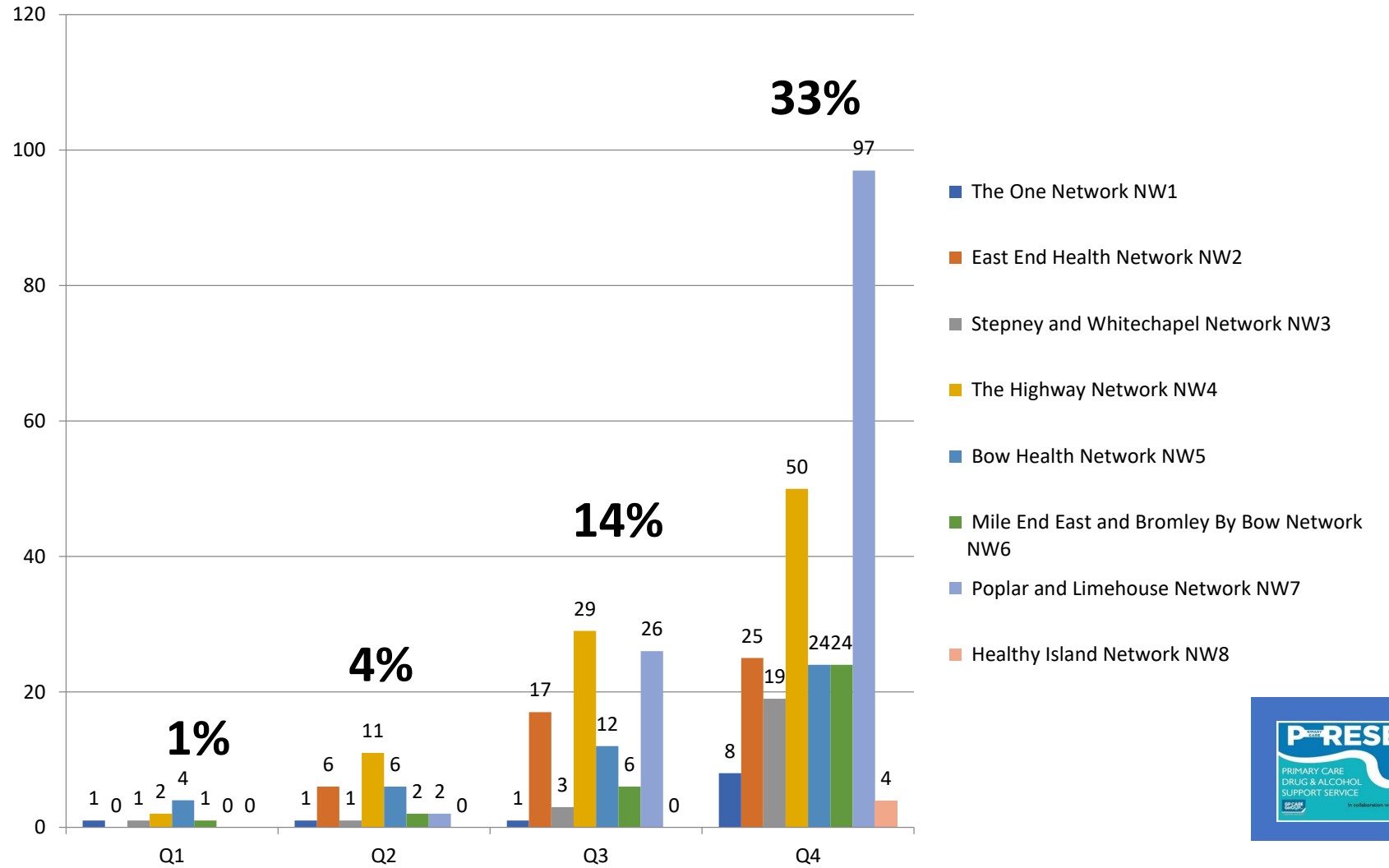
# And a few points

- No alarms expected
- Come back quickly after tea.
- Please complete feedback forms
- Enjoy one of the three workshops. Please make notes of any important points useful to those not there. There will be NO feedback session but we can email



**HOW WE  
ARE DOING  
AND WHAT  
WE NEED TO  
DO!**

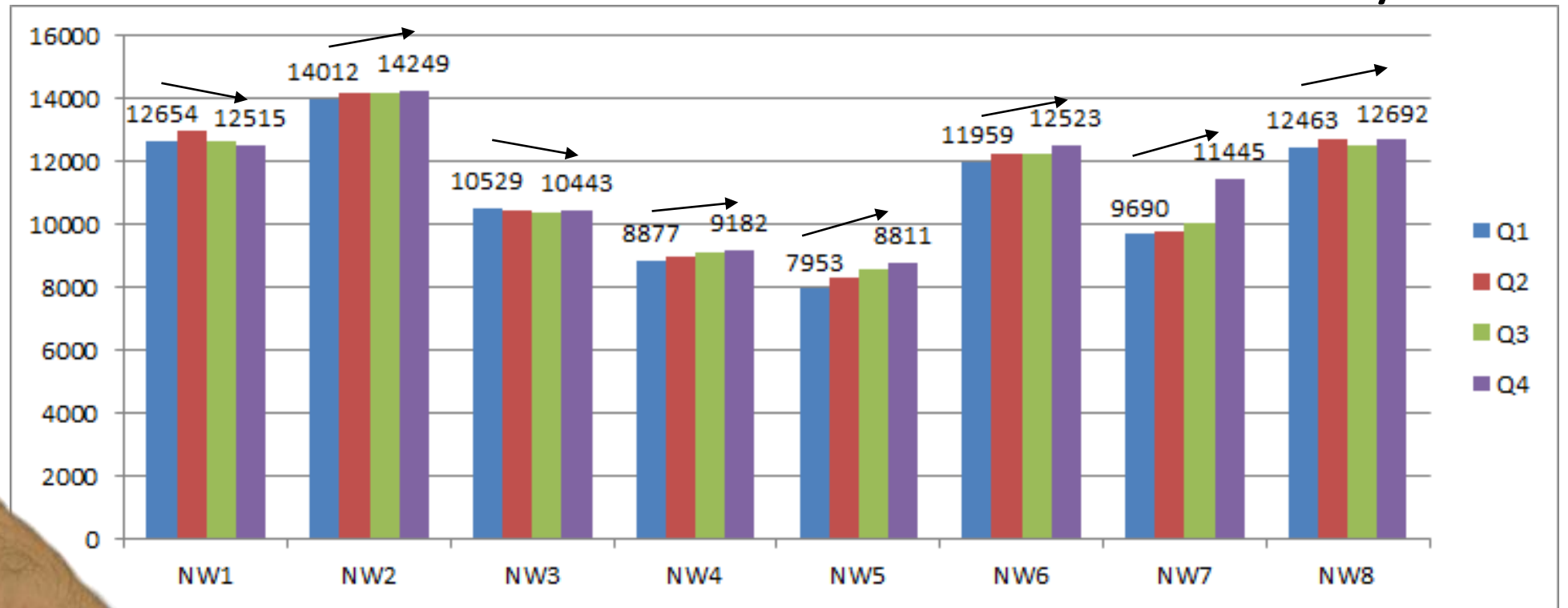
# Yearly performance – Health Checks and Plans



Primary Care RESET TH drug & alcohol support service



# Yearly Performance –AUDIT-C in Q with no AUDIT-C in last 3 yrs



**KEEP PUSHING AUDITS!**

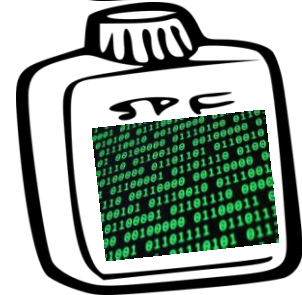


# Yearly Performance – OST monthly patients

3 FACTORS FOR PAYMENT



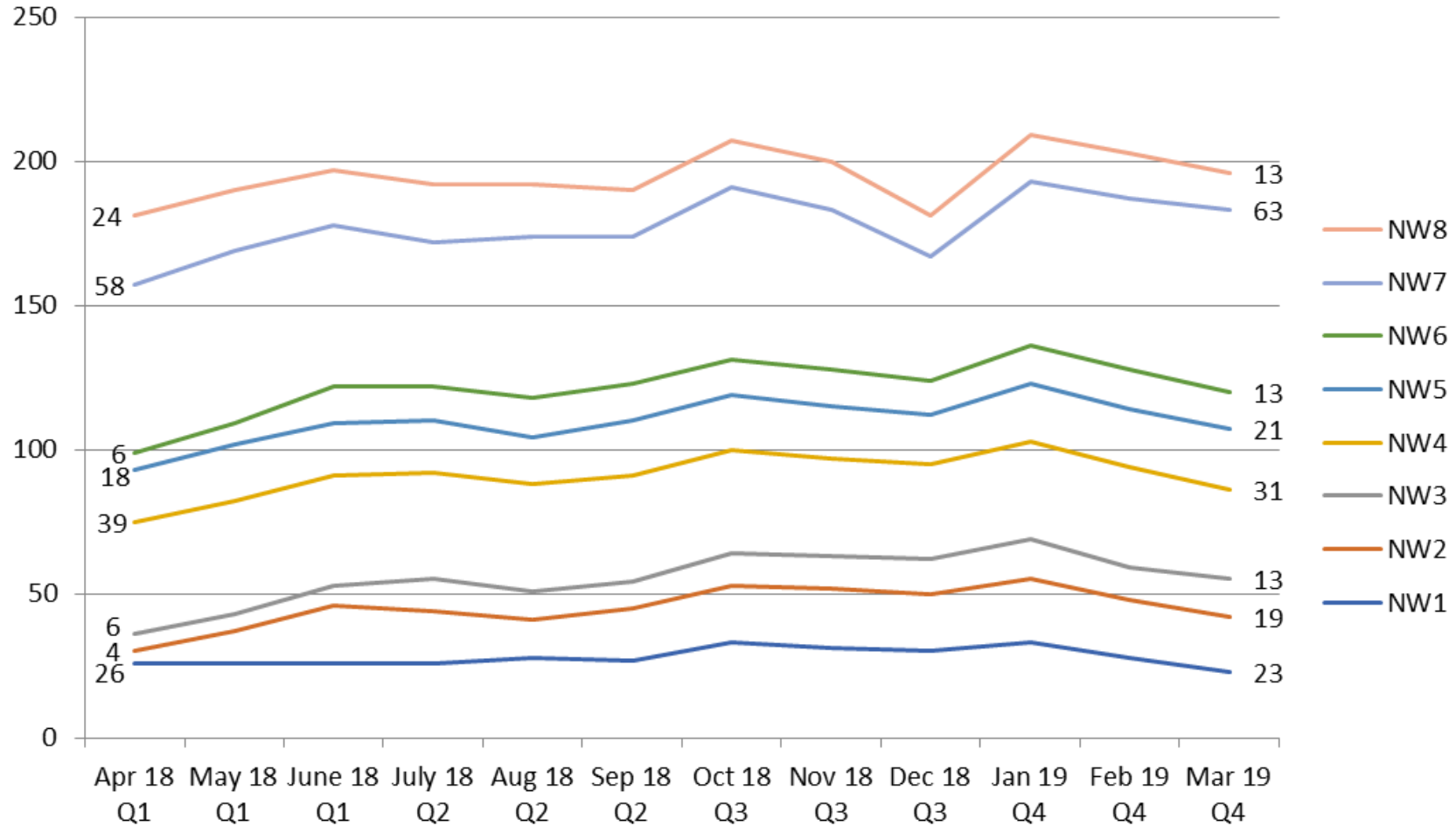
Script



Coding



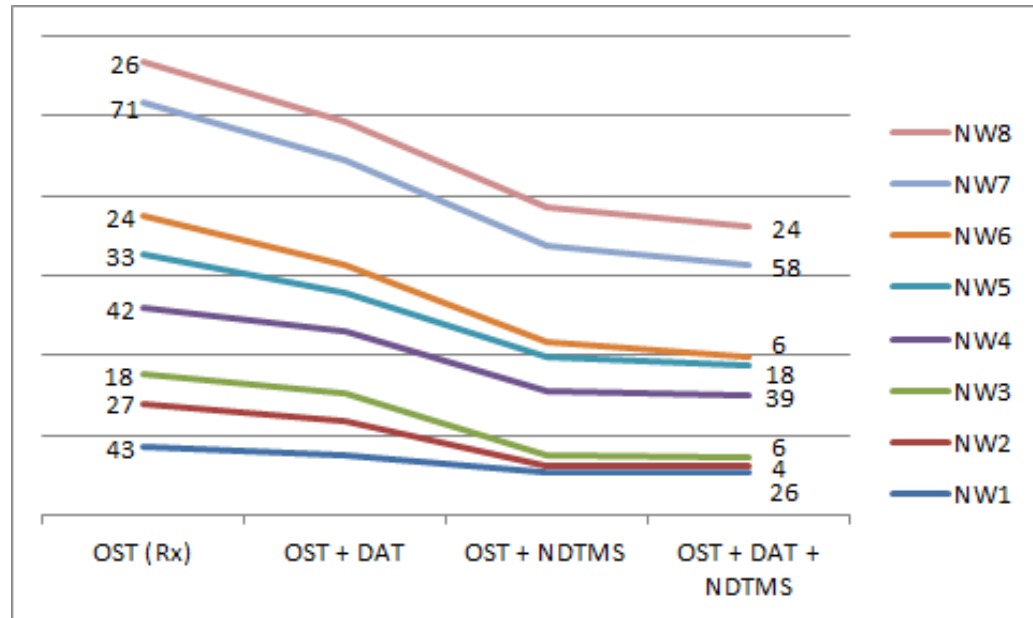
NDTMS



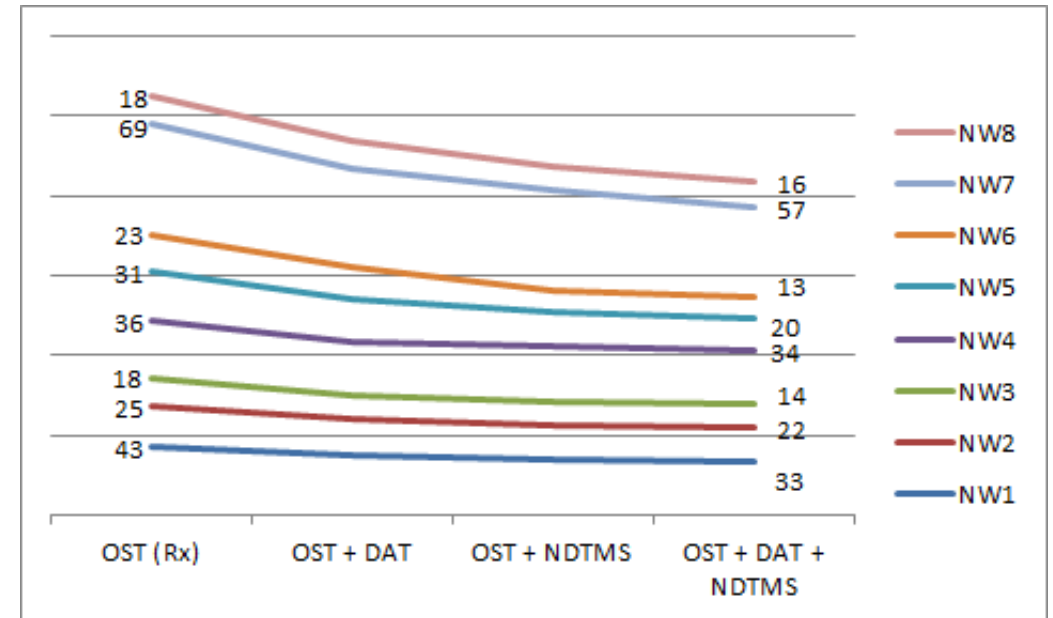


# Yearly Performance – OST Quality

Quarter 1



Quarter 4



# DEVELOPMENTS

## PRIMARY CARE DRUG & ALCOHOL SUPPORT SERVICE Shared Care Hubs with RESET (ELFT)



### NORTH WEST LOCALITY

#### Network 1.

Wards: Weavers, Bethnal Green, St Peter's

#### GP Practices

- 1 Spouts Place
- 2 Bethnal Green
- 3 Pollard Row
- 4 Mission
- 5 Globe Town

#### Network 2.

Wards: Spitalfields and Cany. town, Bethnal Green South

#### GP Practices

- 6 Blin. hale
- 7 Health E1
- 8 Spitalfields
- 9 Albion

### SOUTH WEST LOCALITY

#### Network 3.

Wards: Whitechapel, St Duncan's and Stepney Green

#### GP Practices

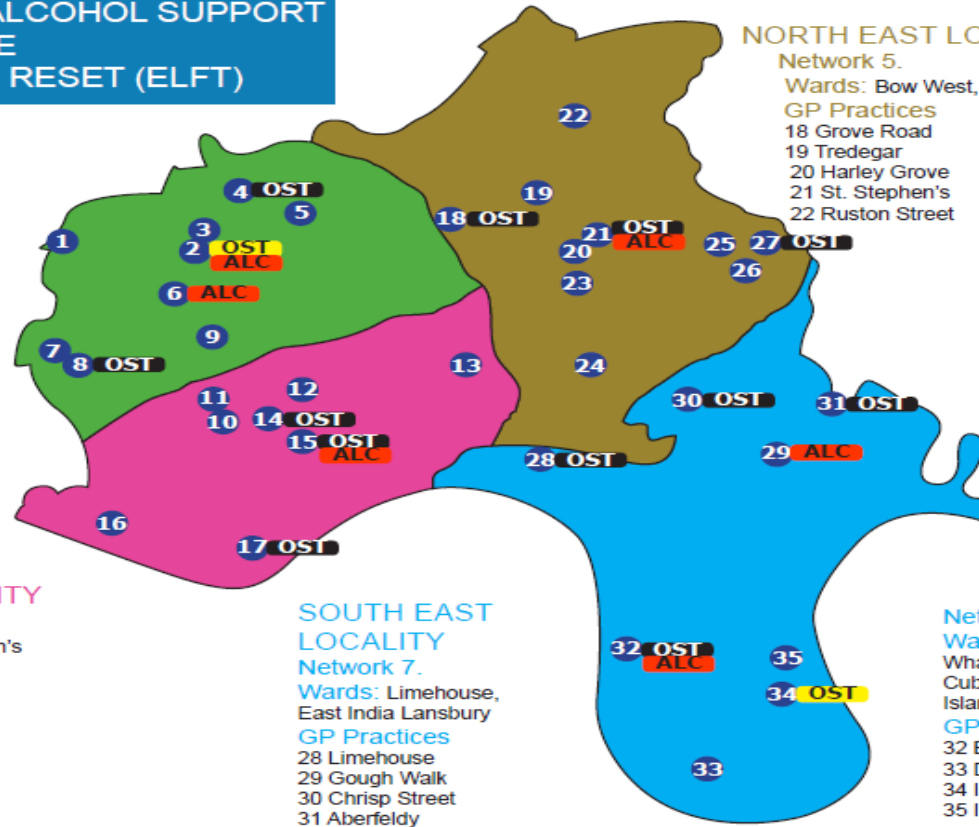
- 10 Whitechapel Health
- 11 City Wellbeing
- 12 Brayford Square
- 13 Harford Health

#### Network 4.

Wards: Shadwell, St Katharine's and Wapping

#### GP Practices

- 14 East One
- 15 Jubilee Street
- 16 St. Katharine's Dock
- 17 Wapping



### NORTH EAST LOCALITY

#### Network 5.

Wards: Bow West, Bow East

#### GP Practices

- 18 Grove Road
- 19 Tredegar
- 20 Harley Grove
- 21 St. Stephen's
- 22 Ruston Street

#### Network 6.

Wards: Mile End East, Bromley by Bow

#### GP Practices

- 23 Merchant Street
- 24 St. Paul's Way
- 25 Stroudley Walk
- 26 St. Andrews
- 27 Bromley by Bow
- 27 XX Plan

#### Network 8.

Wards: Canary Wharf, Blackwall & Cubitt Town, Island Gardens

#### GP Practices

- 32 Barkantine
- 33 Docklands
- 34 Island Health
- 35 Island Medical

- OST OST Hubs Currently in place
- OST OST Hubs Currently in Development
- ALC Alcohol Hubs Currently in Development



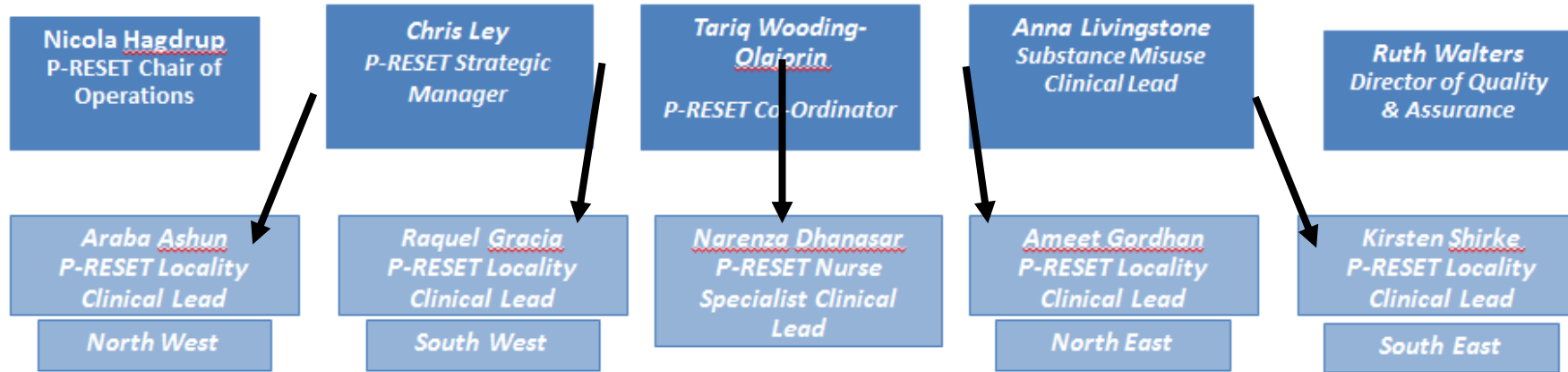
# DEVELOPMENTS



Draft Service Structure Chart



## RECRUITED NEW CLINICAL LEAD ROLES!!



Currently	Anna Livingstone	TH Substance Misuse Clinical Lead
May19	Ruth Walters	TH GP Care Group Director of Quality & Assurance
	Nicola Hagdrup	P-RESET Chair of Operations
	Chris Ley	Strategic Manager
	Tariq Wooding-Olajarin	Co-Ordinator
	Araba Ashun	P-RESET North West Locality Clinical Lead
	Raquel Gracia	P-RESET South West Locality Clinical Lead
	Narenza Dhanasar	P-RESET Nurse Specialist Clinical Lead
	Ameet Gordhan	P-RESET North East Locality Clinical Lead
	Kirsten Shirke	P-RESET South East Locality Clinical Lead





# PRACTICE PERFORMANCE REWARD!



WE WANT TO REWARD ALL PRACTICES!  
FOR 2018-19 we will be paying the following bonus payments

Health Check and Health Plans Completed (Year18-19)	£50
OST (Since the start of service)	£15
Patients with AUDIT-C in Q with no AUDIT-C in last 3 yrs (Year18-19)	50p
Patients with AUDIT-C 5+ and full AUDIT in rolling year (Year18-19)	£1

For 2019-20 we will also be raising OST payment from £35 per patient per month to £40. And adding a new payment of £3 for every Alcohol Referral sent to RESET!



# Where we need to improve...

## Agreed Achievement Baselines

	REVISED INDICATOR	Agreed Achievement Baseline	01/04/2019	To Achieve Year 19-20
1a	% of eligible patients in the process of receiving the Substance Misuse Annual Health Check and Individual Health Plan	70% (Monitoring Target)	75%	75%
1b	% of eligible patients receiving the Substance Misuse Annual Health Check and Individual Health Plan ( <i>completed</i> )	25%	33%	30%
2	% of patients prescribed 100ml of Methadone or above receive annual ECG for patients receiving medication from practice	To be provided at the end of the year (No Figures yet)		
3	% of patients concurrently prescribed Methadone and anti-psychotic medication receive an annual ECG for patients receiving medication from practice	Search criteria due to be changed		45%
4	% of practice population aged 18 or over who have been registered over one year and have had an AUDIT-C or AUDIT in the last 3 years	40%	40.7%	45%
5	% of practice population aged 18 or over, whose most recent AUDIT-C screen in the last 3 years has been 5 or over, who have had a full AUDIT screen with a result of 8+ receive Brief Advice with the Structured Advice Tool	Search criteria due to be changed		35%
6	% of practice population aged 18 or over, whose most recent AUDIT screen has been 20 or over that are referred to Reset Treatment Service ( <i>in the last 3 years</i> )	Search criteria due to be changed		
7	% of patient cohort eligible for the Substance Misuse Annual Health Check that receive PEFR and/or Spirometry in order to increase diagnosis of COPD in the cohort and engage them in the COPD NIS	70%	65.8%	75%
8	% of patient cohort eligible for the Substance Misuse Annual Health Check that have BP reading within 140/90	70%	60.3%	75%
9	% of females in patient cohort eligible for the Substance Misuse Annual Health Check receiving cervical cytology screening at national screening intervals	70%	69.7%	70%

■ 20% lower or more

■ 10%-20% lower

■ Target met or higher



Lisa Sturrock *Service  
Manager Safe East  
(Compass)*



**SAFE EAST FOR  
YOUNG PEOPLE OF  
11-19**

Chris Burgess, *Care Coordinator  
RESET Treatment Service* and  
Monty Moncrieff, *CEO London Friend  
LGBT health & wellbeing charity*



**'It's not just  
heroin and booze'  
What drugs are  
people using,  
why, the effects  
and problems,  
and what support  
is there?**



# TEA TIME!

## 10 Minutes





# What's on this afternoon Part 2

- **Break 3.25**
- **3.35 THE WORKSHOPS - your choice – Session ends 4.30.**
  - 1. Health checks and plans, what does and doesn't work for you and your patients?** Share experience and problems and get tips. For HCAs, GPs, nurses and others doing them. **(ROOM 5)**
  - 2. Naloxone saves lives!** : Learn how to cut opiate deaths at RESUS and by helping people have the kit with them. **Chris Burgess, RESET.** This is open to everyone, we all need to know and get the message out. **(ROOM 3)**
  - 3. Building Relationships patients, practice, the community,** facilitated by **Tariq Wooding-Olajorin, P-RESET coordinator.** For the **RECEPTION TEAM.** **(ROOM 4)**