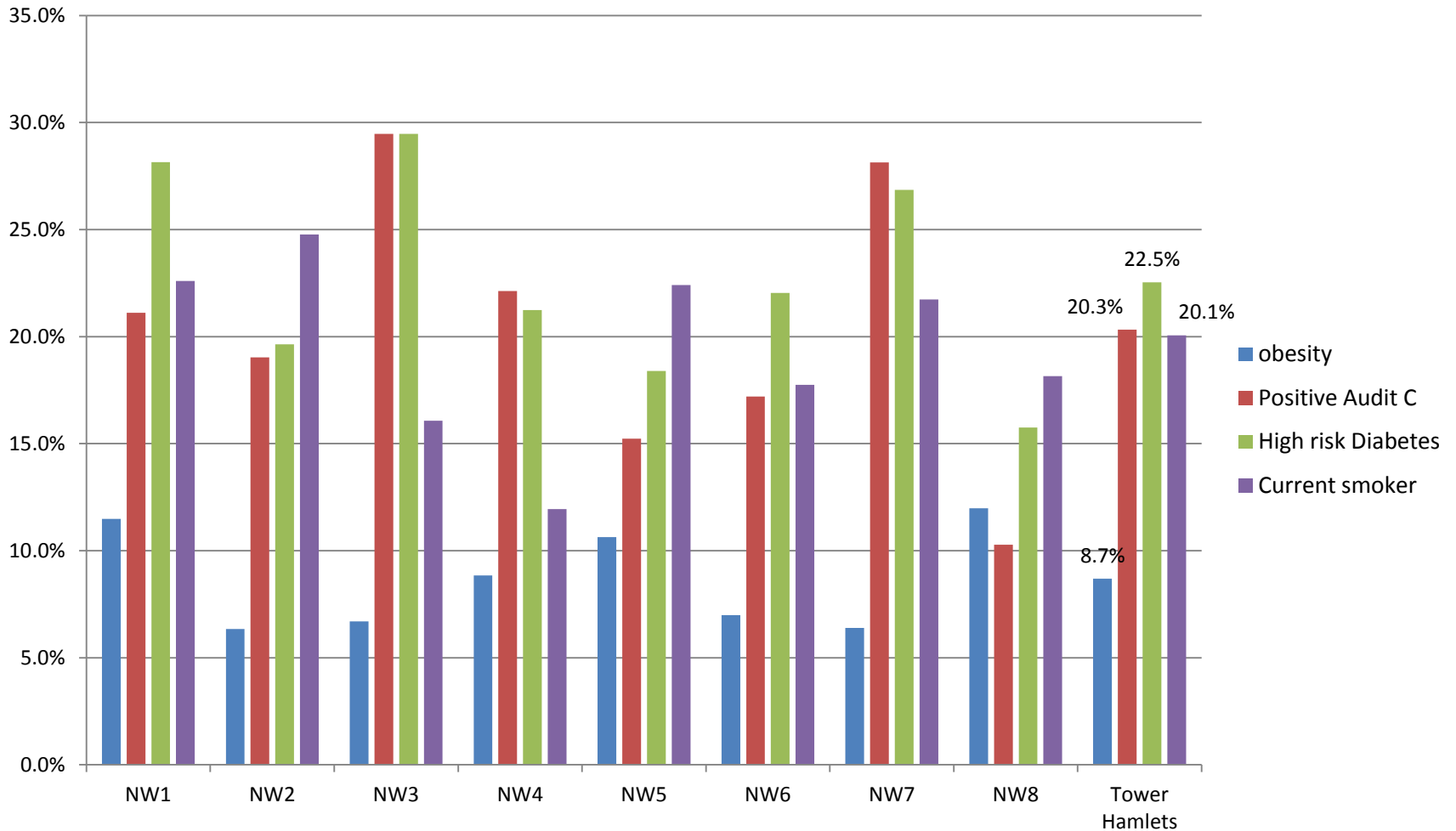


# NHS Health Checks

What is being picked up?

# Quarter 3 October – December 2016



# Numbers of people seen with specific risk factors

	Obesity	Positive Audit C	High risk of diabetes	Current smoker
NW1	31	57	76	61
NW2	21	63	65	82
NW3	15	66	66	36
NW4	20	50	48	27
NW5	37	53	64	78
NW6	13	32	41	33
NW7	25	110	105	85
NW8	35	30	46	53
<b>Tower Hamlets</b>	<b>197</b>	<b>461</b>	<b>511</b>	<b>455</b>

## Accumulated information from NHS Health Checks for February 2017

	<b>% Health checks completed</b>	<b>Numbers of high Q risk patients seen</b>	<b>Fit for Life discussion</b>	<b>Carers status recorded in the health checks</b>	<b>Numbers reporting who are carers</b>	<b>% of carers found</b>
<b>NW1</b>	19.0%	275	79.2%	91.3%	45	4.0%
<b>NW2</b>	19.8%	328	44.8%	92.5%	75	6.0%
<b>NW3</b>	21.8%	222	86.4%	87.0%	54	7.0%
<b>NW4</b>	16.7%	262	73.7%	70.9%	58	7.2%
<b>NW5</b>	17.3%	288	69.2%	92.6%	63	6.3%
<b>NW6</b>	18.0%	218	87.6%	90.3%	62	6.9%
<b>NW7</b>	18.0%	315	82.6%	93.0%	122	9.5%
<b>NW8</b>	17.6%	198	65.8%	95.3%	73	4.9%
<b>Tower Hamlets</b>	<b>18.3%</b>	<b>2106</b>	<b>73.9%</b>	<b>89.6%</b>	<b>552</b>	<b>6.4%</b>